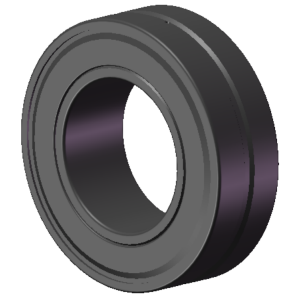


LILY BEARING



D1:	≈163	mm	Shoulder/Recess Dia of Outer Ring
d1:	≈120	mm	Shoulder Dia of Inner Ring
b:	6	mm	Width Of Lubrication Groove
K:	3	mm	Dia of Lubrication Hole
R <sub>1,2</sub> :	min 2	mm	Chamfer Dimension

**LILY**<sup>®</sup>

SHANGHAI LILY BEARING LIMITED

Email: [lilybearing@lily-bearing.com](mailto:lilybearing@lily-bearing.com)

Part  
Number

24122-2CS5/VT143  
Spherical Roller Bearings