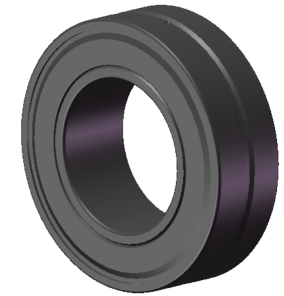


LILY BEARING



D1:	≈406	mm	Shoulder/Recess Dia of Outer Ring
d1:	≈270	mm	Shoulder Dia of Inner Ring
b:	22.3	mm	Width Of Lubrication Groove
K:	12	mm	Dia of Lubrication Hole
R _{1,2} :	min 5	mm	Chamfer Dimension

LILY[®]

SHANGHAI LILY BEARING LIMITED

Email: lilybearing@lily-bearing.com

Part
Number

22344-2CS5/VT143
Spherical Roller Bearings