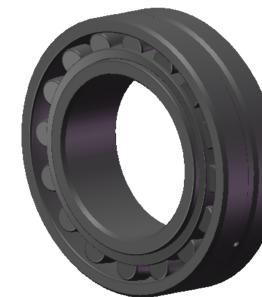


LILY BEARING



- D1: ≈74.3 mm Shoulder/Recess Dia of Outer Ring
- d1: ≈49.9 mm Shoulder Dia of Inner Ring
- b: 6 mm Width Of Lubrication Groove
- K: 3 mm Dia of Lubrication Hole
- R_{1,2}: min 1.5 mm Chamfer Dimension

LILY[®]

SHANGHAI LILY BEARING LIMITED
Email: lilybearing@lily-bearing.com

Part
Number

22308 E/VA405
Spherical Roller Bearings