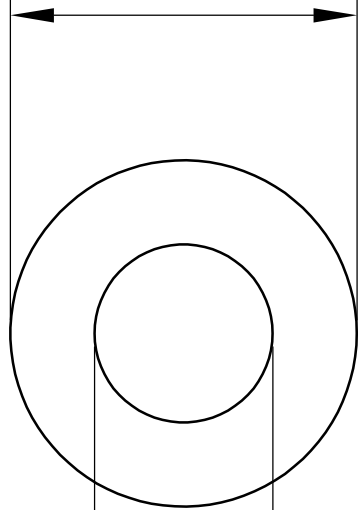
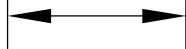


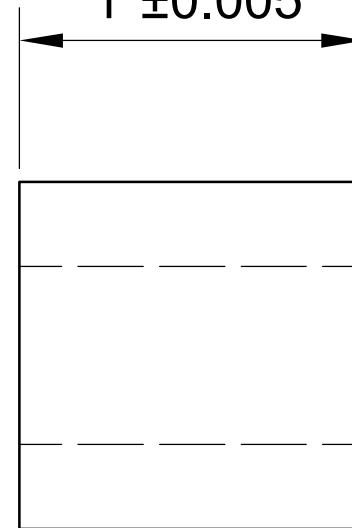
$\text{Ø}0.5953''^{+0.0007}_{-0.0000}$



$\text{Ø}0.504''^{+0.001}_{-0.000}$



$1'' \pm 0.005$



**LILY**<sup>®</sup>

SHANGHAI LILY BEARING LIMITED

Email: [lilybearing@lily-bearing.com](mailto:lilybearing@lily-bearing.com)

Part  
Number

6621K136 Chemical-Resistant  
Dry-Running PEEK Sleeve Bearing