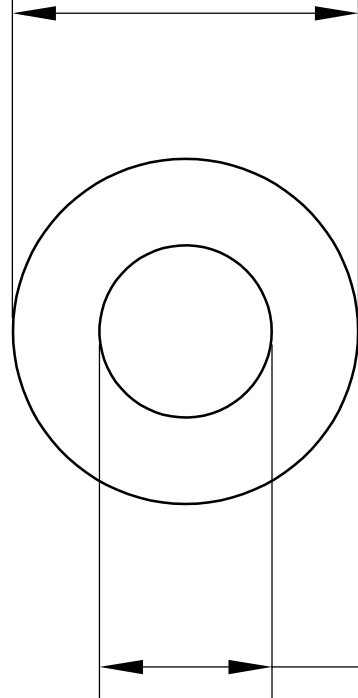
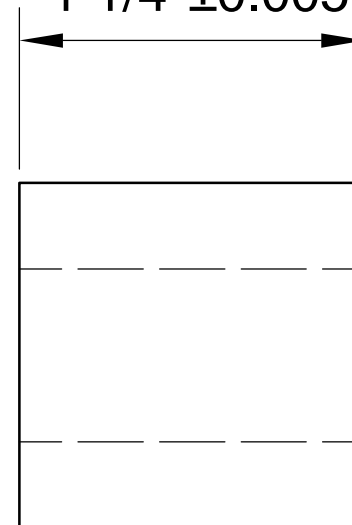


$\text{Ø}0.875''+0.002$



$0.75''+0.002$

$1\ 1/4''\pm 0.005$



LILY[®]

SHANGHAI LILY BEARING LIMITED

Email: lilybearing@lily-bearing.com

Part
Number

2610T32 Light Duty
Dry-Running Nylon Sleeve Bearing