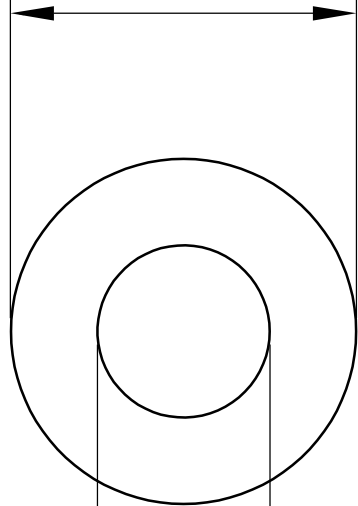
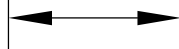




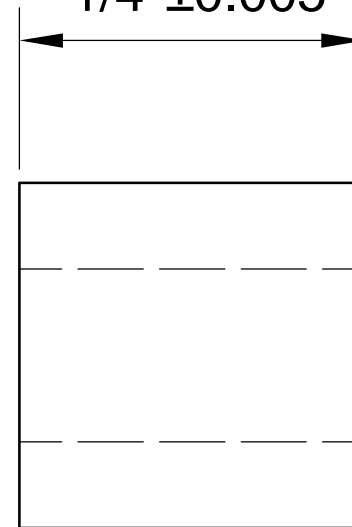
$\text{Ø}0.3125''+0.002$



$0.1875''+0.002$



$1/4''\pm 0.005$



**LILY<sup>®</sup>**

SHANGHAI LILY BEARING LIMITED

Email: [lilybearing@lily-bearing.com](mailto:lilybearing@lily-bearing.com)

Part  
Number

2610T3 Light Duty  
Dry-Running Nylon Sleeve Bearing