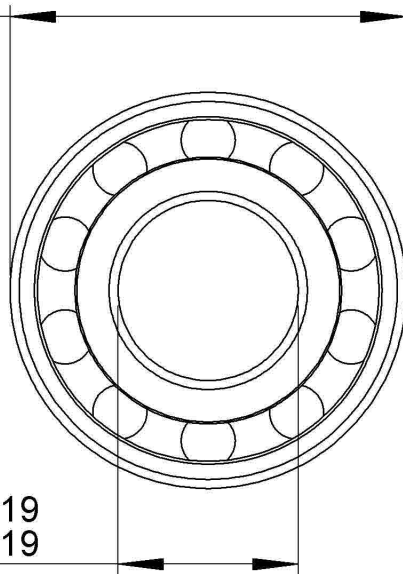
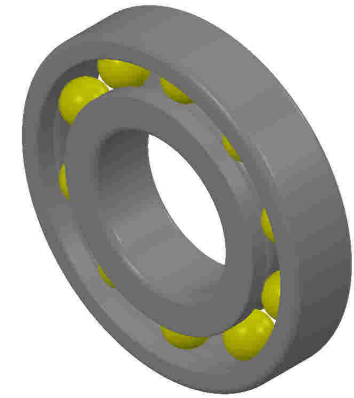
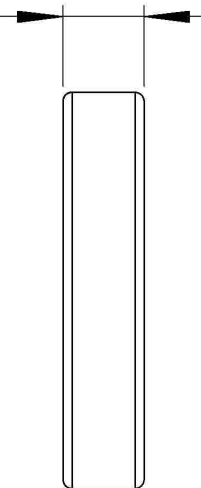


$\phi 1.375\text{in} \begin{matrix} -0.00031 \\ -0.00078 \end{matrix}$



$\phi 0.625\text{in} \begin{matrix} +0.00019 \\ -0.00019 \end{matrix}$

$0.2812\text{in} \begin{matrix} 0 \\ -0.005 \end{matrix}$



LILY[®]

SHANGHAI LILY BEARING LIMITED
Email: lilybearing@lily-bearing.com

Part
Number

D/W R10
Deep Groove Ball Bearings